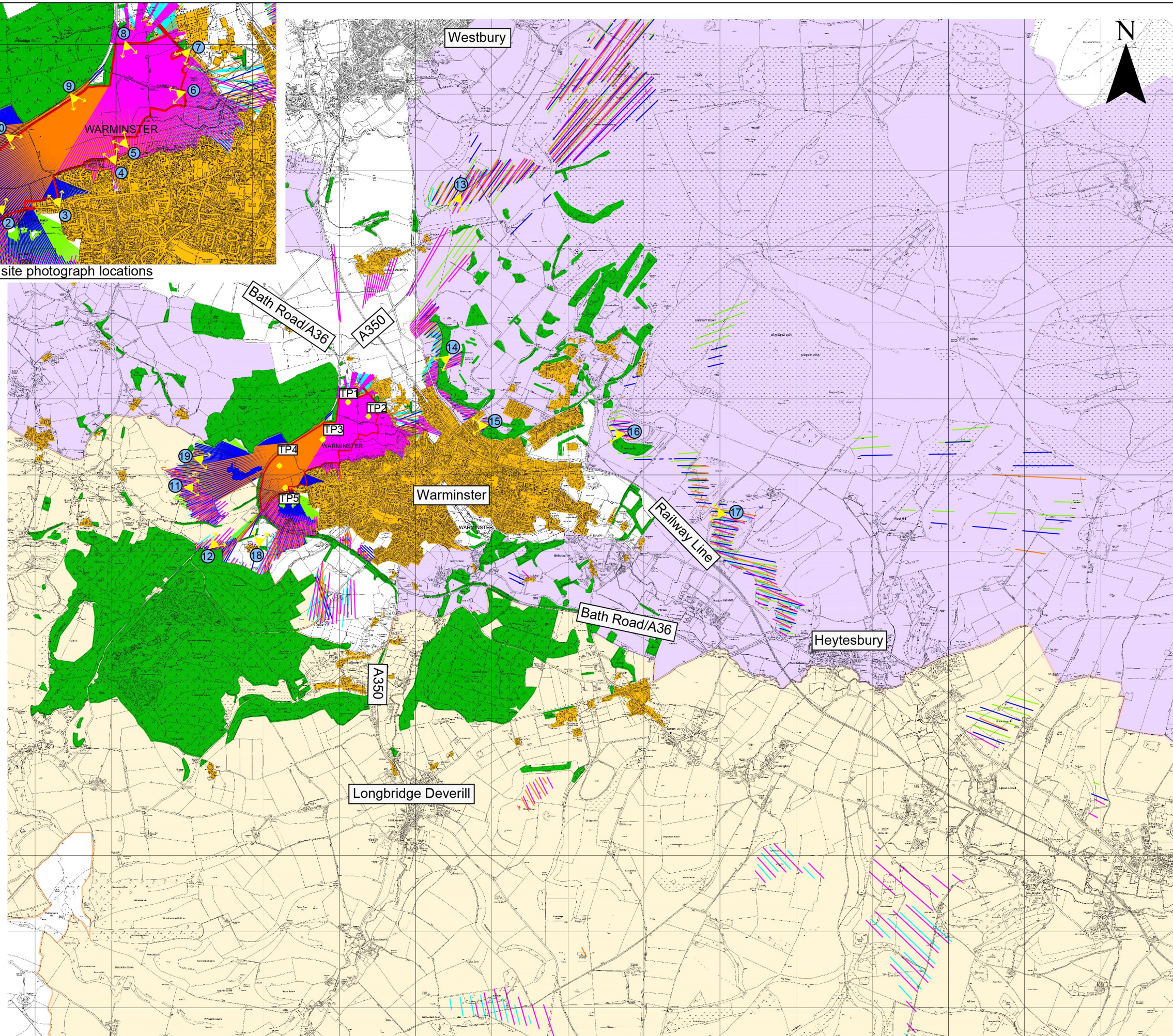


Inset showing site photograph locations



- LEGEND**
- Site boundary
  - Target point (assumed height of proposed development: 8-13m)
  - Visibility of Target Point 1 at 11m-Employment
  - Visibility of Target Point 2 at 10m-Residential
  - Visibility of Target Point 3 at 11m-Residential
  - Visibility of Target Point 4 at 13m-School
  - Visibility of Target Point 5 at 10m-Residential
- Visual Barriers (Assumed Heights)**
- Existing settlements 9m
  - Existing woodland 15m (Note 1)
  - Photograph locations
  - Angle of photograph view
  - Cranborne Chase and West Wiltshire Downs Area of Outstanding Natural Beauty
  - Special Landscape Area

**Figure LVI5**

© This drawing and its content are the copyright of SLR Consulting Ltd and may not be reproduced or amended except by prior written permission. SLR Consulting Ltd accepts no liability for any amendments made by other persons.

**SLR** global environmental solutions

LANGFORD LODGE  
109 PEMBROKE ROAD  
CLIFTON, BRISTOL  
BS8 3EU  
T: 01179 064280  
F: 01173 179535  
www.slrconsulting.com

**LAND WEST OF WARMINSTER**  
**PERSIMMON HOMES**  
**ZONE OF THEORETICAL VISIBILITY**  
**416.04656.00007.29.016.0**

Scale AS SHOWN Date MARCH 2016



04656.00007.29.016.0 - ZTV.dwg